

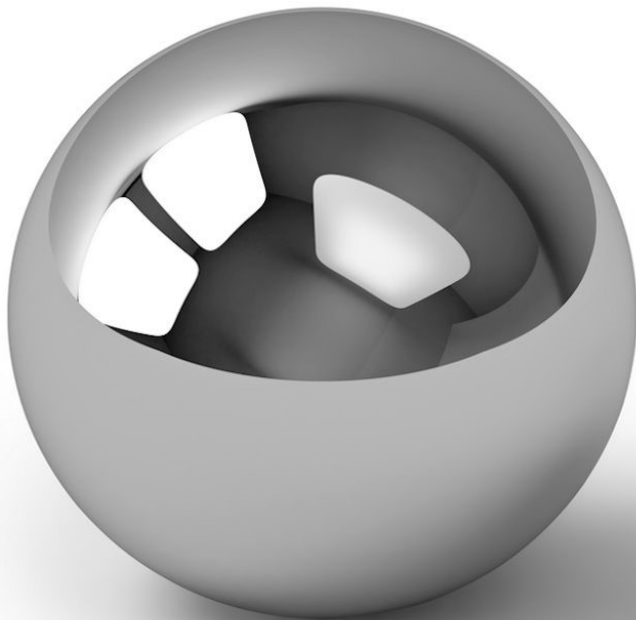


MBA

2022.2

Balls Range

Precision - Commercial - Ceramic - Steel - Plastic - Rubber



TYPE	PAGE
Ceramic	3 - 5
- Ruby - Sapphire	
- Silicon Nitride (Si3N4)	
- Zirconia (ZRO2)	
Fixture / Checking	6
Metallic	7 - 13
- Bronze	
- Chrome Steel	
- Stainless Steel	
- Threaded	
- Titanium	
- Tungsten Carbide	
Metallic - Bored	14
Plastic	14 - 18
- Acetal	
- Acrylic	
- Nylon	
- Polypropylene	
- PTFE	
- PVC	
Plastic - Bored	18 - 19
Rubber	19 - 20
Threaded	20
Tooling	20 - 23

To find and order parts online, simply type the part number from this catalogue into the search box on any web page.

Prefixes and Suffixes

BL	- 00600	- S440	- G10
1	2	3	4

1 Ball:
BL: Code for all balls

2 Diameter:
Shifted 2 decimal places. 00600 is 6mm diameter

3 Material:
AC: Acetal
ACR: Acrylic
CH: Bearing Grade Chrome Steel
NY: Nylon
PB: Phosphor Bronze
PP: Polypropylene
PTF: Polytetrafluoroethylene

PVC: Polyvinyl Chloride
R40D: Santoprene Rubber 40D
R87A: Santoprene Rubber 87A
RY: Synthetic Ruby
S4: AIS 304 Grade Stainless
S440: 440C Bearing Grade Stainless.
S6: AIS 316 Grade Stainless
S6L: AIS 316L Grade Stainless

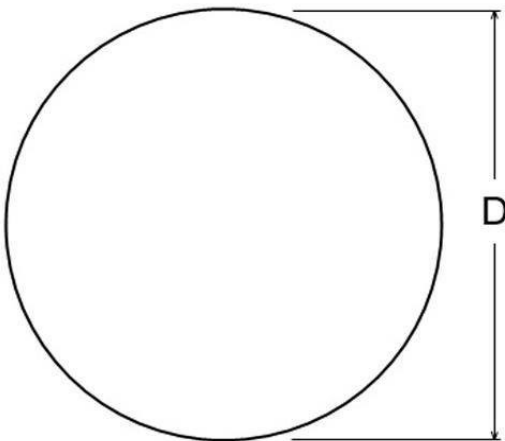
Grade:
4 G10: AFBMA Grade 10

The lower the number the higher the precision of the ball. Refer to our website for a full description of AFBMA ball grading.

These are just some of the most commonly used suffixes. Please refer to MBA for information on suffixes not listed.

Diagrams

Basic Ball



Tooling / Inspection Ball

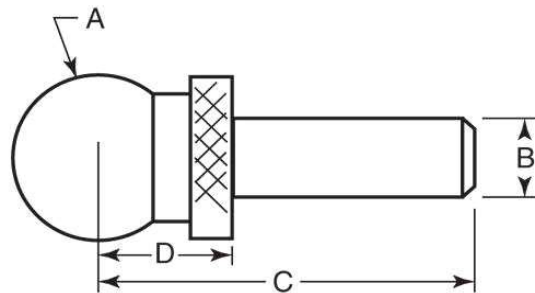


Diagram is for reference only. Not all tooling balls have shoulders. Please refer to the online listings for more comprehensive information.

Ceramic Balls

Diameter (D) mm	Material	Precision Grade	Hardness	Part Number
0.150 (0.006") +/-0.00635	Synthetic Ruby	Grade 25	9 Mohs	* BL-00015-RY-G25
0.150 (0.006") +/-0.00635	Synthetic Sapphire	Grade 25	9 Mohs	* BL-00015-SP-G25
0.198 (0.008") +/-0.00635	Synthetic Ruby	Grade 25	9 Mohs	BL-00020-RY-G25
0.198 (0.008") +/-0.00635	Synthetic Sapphire	Grade 25	9 Mohs	BL-00020-SP-G25
0.300 (0.012") +/-0.00635	Synthetic Sapphire	Grade 25	9 Mohs	BL-00030-SP-G25
0.300 (0.012") +/-0.00635	Synthetic Ruby	Grade 25	9 Mohs	BL-00030-RY-G25
0.351 (0.014") +/-0.00635	Synthetic Ruby	Grade 25	9 Mohs	BL-00035-RY-G25
0.351 (0.014") +/-0.00635	Synthetic Sapphire	Grade 25	9 Mohs	BL-00035-SP-G25
0.381 (0.015") +/-0.00635	Synthetic Ruby	Grade 25	9 Mohs	BL-00038-RY-G25
0.381 (0.015") +/-0.00635	Synthetic Sapphire	Grade 25	9 Mohs	BL-00038-SP-G25
0.397 (0.016") +/-0.00635	Synthetic Sapphire	Grade 25	9 Mohs	BL-00039-SP-G25
0.397 (0.016") +/-0.00635	Synthetic Ruby	Grade 25	9 Mohs	BL-00039-RY-G25
0.483 (0.019") +/-0.00635	Synthetic Sapphire	Grade 25	9 Mohs	BL-00048-SP-G25
0.483 (0.019") +/-0.00635	Synthetic Ruby	Grade 25	9 Mohs	BL-00048-RY-G25
0.500 (0.020") +/-0.00635	Synthetic Ruby	Grade 25	9 Mohs	BL-00050-RY-G25
0.500 (0.020") +/-0.00635	Synthetic Sapphire	Grade 25	9 Mohs	BL-00050-SP-G25
0.599 (0.024") +/-0.00635	Synthetic Sapphire	Grade 25	9 Mohs	BL-00060-SP-G25
0.599 (0.024") +/-0.00635	Synthetic Ruby	Grade 25	9 Mohs	BL-00060-RY-G25
0.653 (0.026") +/-0.00635	Synthetic Ruby	Grade 25	9 Mohs	BL-00065-RY-G25
0.653 (0.026") +/-0.00635	Synthetic Sapphire	Grade 25	9 Mohs	BL-00065-SP-G25
0.673 (0.026") +/-0.00635	Synthetic Sapphire	Grade 25	9 Mohs	BL-00067-SP-G25
0.673 (0.026") +/-0.00635	Synthetic Ruby	Grade 25	9 Mohs	BL-00067-RY-G25
0.794 (0.031") +/-0.00635	Synthetic Ruby	Grade 25	9 Mohs	BL-00079-RY-G25
0.794 (0.031") +/-0.00635	Synthetic Sapphire	Grade 25	9 Mohs	BL-00079-SP-G25
1.000 (0.039") +/-0.00635	Synthetic Sapphire	Grade 25	9 Mohs	BL-00100-SP-G25
1.000 (0.039") +/-0.00635	Synthetic Ruby	Grade 25	9 Mohs	BL-00100-RY-G25
1.199 (0.047") +/-0.00635	Synthetic Sapphire	Grade 25	9 Mohs	BL-00120-SP-G25
1.199 (0.047") +/-0.00635	Synthetic Ruby	Grade 25	9 Mohs	BL-00120-RY-G25
1.501 (0.059") +/-0.00635	Synthetic Sapphire	Grade 25	9 Mohs	BL-00150-SP-G25
1.501 (0.059") +/-0.00635	Synthetic Ruby	Grade 25	9 Mohs	BL-00150-RY-G25
1.588 (0.063") +/-0.00635	Si3N4	Grade 25	1580 kg/mm.sq	BL-00159-SN-G25
1.588 (0.063") +/-0.00635	Synthetic Ruby	Grade 25	9 Mohs	BL-00159-RY-G25
1.588 (0.063") +/-0.00635	Synthetic Sapphire	Grade 25	9 Mohs	BL-00159-SP-G25



Stocked or Short Delivery



Usually Available Short Delivery



Long delivery or not in current production

* Large Minimum Quantities

** Available only while stock lasts

Ceramic Balls

Diameter (D) mm	Material	Precision Grade	Hardness	Part Number
2.000 (0.079") +/-0.00635	ZRO2	Grade 25	1300 kg/mm.sq	BL-00200-ZR-G25
2.000 (0.079") +/-0.00635	Synthetic Sapphire	Grade 25	9 Mohs	BL-00200-SP-G25
2.000 (0.079") +/-0.00635	Synthetic Ruby	Grade 25	9 Mohs	BL-00200-RY-G25
2.381 (0.094") +/-0.00635	Si3N4	Grade 25	1580 kg/mm.sq	BL-00238-SN-G25
2.381 (0.094") +/-0.00635	Synthetic Sapphire	Grade 25	9 Mohs	BL-00238-SP-G25
2.381 (0.094") +/-0.00635	Synthetic Ruby	Grade 25	9 Mohs	BL-00238-RY-G25
2.499 (0.098") +/-0.00635	Synthetic Sapphire	Grade 25	9 Mohs	BL-00250-SP-G25
2.499 (0.098") +/-0.00635	Synthetic Ruby	Grade 25	9 Mohs	BL-00250-RY-G25
2.500 (0.098") +/-0.00635	Si3N4	Grade 25	1580 kg/mm.sq	BL-00250-SN-G25
2.779 (0.109") +/-0.00635	Synthetic Ruby	Grade 25	9 Mohs	BL-00278-RY-G25
2.779 (0.109") +/-0.00635	Synthetic Sapphire	Grade 25	9 Mohs	BL-00278-SP-G25
3.000 (0.118") +/-0.00635	ZRO2	Grade 25	1300 kg/mm.sq	BL-00300-ZR-G25
3.000 (0.118") +/-0.00635	Si3N4	Grade 25	1580 kg/mm.sq	BL-00300-SN-G25
3.000 (0.118") +/-0.00635	Synthetic Ruby	Grade 25	9 Mohs	BL-00300-RY-G25
3.000 (0.118") +/-0.00635	Synthetic Sapphire	Grade 25	9 Mohs	BL-00300-SP-G25
3.175 (0.125") +/-0.00635	ZRO2	Grade 25	1300 kg/mm.sq	BL-00318-ZR-G25
3.175 (0.125") +/-0.00635	Si3N4	Grade 25	1580 kg/mm.sq	BL-00318-SN-G25
3.175 (0.125") +/-0.00635	Synthetic Ruby	Grade 25	9 Mohs	BL-00318-RY-G25
3.175 (0.125") +/-0.00635	Synthetic Sapphire	Grade 25	9 Mohs	BL-00318-SP-G25
3.175 (0.125") +/-0.0254	Si3N4	Grade 100	1580 kg/mm.sq	** BL-00318-SN-G100
3.500 (0.138") +/-0.00635	Si3N4	Grade 25	1580 kg/mm.sq	BL-00350-SN-G25
3.969 (0.156") +/-0.00635	Si3N4	Grade 25	1580 kg/mm.sq	BL-00397-SN-G25
3.969 (0.156") +/-0.00635	Synthetic Sapphire	Grade 25	9 Mohs	BL-00397-SP-G25
3.969 (0.156") +/-0.00635	Synthetic Ruby	Grade 25	9 Mohs	BL-00397-RY-G25
4.000 (0.157") +/-0.00635	ZRO2	Grade 25	1300 kg/mm.sq	BL-00400-ZR-G25
4.000 (0.157") +/-0.00635	Si3N4	Grade 25	1580 kg/mm.sq	BL-00400-SN-G25
4.000 (0.157") +/-0.00635	Synthetic Sapphire	Grade 25	9 Mohs	BL-00400-SP-G25
4.000 (0.157") +/-0.00635	Synthetic Ruby	Grade 25	9 Mohs	BL-00400-RY-G25
4.763 (0.188") +/-0.00635	ZRO2	Grade 25	1300 kg/mm.sq	BL-00476-ZR-G25
4.763 (0.188") +/-0.00635	Si3N4	Grade 25	1580 kg/mm.sq	BL-00476-SN-G25
4.763 (0.188") +/-0.00635	Synthetic Ruby	Grade 25	9 Mohs	BL-00476-RY-G25
4.763 (0.188") +/-0.00635	Synthetic Sapphire	Grade 25	9 Mohs	BL-00476-SP-G25
5.000 (0.197") +/-0.00635	ZRO2	Grade 25	1300 kg/mm.sq	BL-00500-ZR-G25



Stocked or Short Delivery



Usually Available Short Delivery



Long delivery or not in current production

* Large Minimum Quantities

** Available only while stock lasts

Ceramic Balls

Diameter (D) mm	Material	Precision Grade	Hardness	Part Number
5.000 (0.197") +/-0.00635	Si3N4	Grade 25	1580 kg/mm.sq	BL-00500-SN-G25
5.000 (0.197") +/-0.00635	Synthetic Sapphire	Grade 25	9 Mohs	BL-00500-SP-G25
5.000 (0.197") +/-0.00635	Synthetic Ruby	Grade 25	9 Mohs	BL-00500-RY-G25
5.556 (0.219") +/-0.00635	Synthetic Sapphire	Grade 25	9 Mohs	BL-00556-SP-G25
5.556 (0.219") +/-0.00635	Synthetic Ruby	Grade 25	9 Mohs	BL-00556-RY-G25
6.000 (0.236") +/-0.00635	Si3N4	Grade 25	1580 kg/mm.sq	BL-00600-SN-G25
6.000 (0.236") +/-0.00635	Synthetic Ruby	Grade 25	9 Mohs	BL-00600-RY-G25
6.000 (0.236") +/-0.00635	Synthetic Sapphire	Grade 25	9 Mohs	BL-00600-SP-G25
6.350 (0.250") +/-0.00635	ZRO2	Grade 25	1300 kg/mm.sq	BL-00635-ZR-G25
6.350 (0.250") +/-0.00635	Si3N4	Grade 25	1580 kg/mm.sq	BL-00635-SN-G25
6.350 (0.250") +/-0.00635	Synthetic Ruby	Grade 25	9 Mohs	BL-00635-RY-G25
6.350 (0.250") +/-0.00635	Synthetic Sapphire	Grade 25	9 Mohs	BL-00635-SP-G25
7.938 (0.313") +/-0.00635	Si3N4	Grade 25	1580 kg/mm.sq	BL-00794-SN-G25
7.938 (0.313") +/-0.00635	Synthetic Ruby	Grade 25	9 Mohs	BL-00794-RY-G25
7.938 (0.313") +/-0.00635	Synthetic Sapphire	Grade 25	9 Mohs	BL-00794-SP-G25
8.000 (0.315") +/-0.00635	Si3N4	Grade 25	1580 kg/mm.sq	BL-00800-SN-G25
9.525 (0.375") +/-0.00635	ZRO2	Grade 25	1300 kg/mm.sq	BL-00953-ZR-G25
9.525 (0.375") +/-0.00635	Si3N4	Grade 25	1580 kg/mm.sq	BL-00953-SN-G25
9.525 (0.375") +/-0.00635	Synthetic Sapphire	Grade 25	9 Mohs	BL-00953-SP-G25
9.525 (0.375") +/-0.00635	Synthetic Ruby	Grade 25	9 Mohs	BL-00953-RY-G25
10.000 (0.394") +/-0.00635	ZRO2	Grade 25	1300 kg/mm.sq	BL-01000-ZR-G25
10.000 (0.394") +/-0.00635	Si3N4	Grade 25	1580 kg/mm.sq	BL-01000-SN-G25
10.318 (0.406") +/-0.00635	Si3N4	Grade 25	1580 kg/mm.sq	BL-01032-SN-G25
12.000 (0.472") +/-0.00635	Si3N4	Grade 25	1580 kg/mm.sq	BL-01200-SN-G25
12.700 (0.500") +/-0.01270	ZRO2	Grade 50	1300 kg/mm.sq	BL-01270-ZR-G50
12.700 (0.500") +/-0.00635	Si3N4	Grade 25	1580 kg/mm.sq	BL-01270-SN-G25
15.081 (0.594") +/-0.01270	Si3N4	Grade 50	1580 kg/mm.sq	BL-01508-SN-G50
15.875 (0.625") +/-0.01270	ZRO2	Grade 50	1300 kg/mm.sq	BL-01588-ZR-G50
15.875 (0.625") +/-0.01270	Si3N4	Grade 50	1580 kg/mm.sq	BL-01588-SN-G50
17.463 (0.688") +/-0.01270	Si3N4	Grade 50	1580 kg/mm.sq	BL-01746-SN-G50
18.000 (0.709") +/-0.01270	ZRO2	Grade 50	1300 kg/mm.sq	BL-01800-ZR-G50
19.050 (0.750") +/-0.01270	ZRO2	Grade 50	1300 kg/mm.sq	BL-01905-ZR-G50
19.050 (0.750") +/-0.01270	Si3N4	Grade 50	1580 kg/mm.sq	BL-01905-SN-G50



Stocked or Short Delivery



Usually Available Short Delivery



Long delivery or not in current production

* Large Minimum Quantities

** Available only while stock lasts

Fixture and Checking Balls

Diameter (A) mm	Shank Diameter (D) mm	Base to Centre (B) mm	Shoulder to Centre (C) mm		Part Number
3.175 (0.125") +/- 0.0051	3.188 +/- 0.0051	9.525 +/- 0.1270	2.383	Stainless Steel	BCHK-00318-S440
6.350 (0.250") +/- 0.0025	3.167 +0/- 0.0051	14.224 +/- 0.127		Stainless Steel	BFX-00635-S440
6.350 (0.250") +/- 0.0013	3.167 +/- 0.1270	14.224 +/- 0.0076		Tungsten Carbide	BFX-00635-TC
6.350 (0.250") +/- 0.0051	3.167 +/- 0.0051	14.224 +/- 0.1270	5.080	Tungsten Carbide	BCHK-00635-TC
6.350 (0.250") +/- 0.0051	3.167 +/- 0.0051	14.224 +/- 0.1270	5.080	Stainless Steel	BCHK-00635-S440
6.350 (0.250") +0.0/-0.0051	3.167 +0.0/-0.0051	14.732 +/-0.0051	5.080	Carbon Steel	* BIN-00635-HS-SOL
9.525 (0.375") +0.0/-0.0051	4.755 +0.0/-0.0051	18.796 +/-0.0051	7.620	Carbon Steel	* BIN-00953-HS-SOL
9.525 (0.375") +/- 0.0025	4.755 +0/- 0.0051	19.050 +/- 0.127		Stainless Steel	BFX-00953-S440
9.525 (0.375") +/- 0.0013	4.755 +/- 0.1270	19.050 +/- 0.0076		Tungsten Carbide	BFX-00953-TC
9.525 (0.375") +/- 0.0051	4.755 +/- 0.0051	19.050 +/- 0.1270	7.620	Stainless Steel	BCHK-00953-S440
9.525 (0.375") +/- 0.0051	4.755 +/- 0.0051	19.050 +/- 0.1270	7.620	Tungsten Carbide	BCHK-00953-TC
9.525 (0.375") +0.0/-0.0051	7.938 +0.0/-0.0051	18.796 +/-0.0051	7.620	Carbon Steel	BIN-00953-HS
12.700 (0.500") +0.0/-0.0051	6.342 +0.0/-0.0051	16.002 +/-0.0051	7.938	Carbon Steel	BIN-01270-HS-A
12.700 (0.500") +0.0/-0.0051	6.342 +0.0/-0.0051	22.352 +/-0.0051	12.700	Carbon Steel	* BIN-01270-HS-B
12.700 (0.500") +0.0/-0.0051	6.342 +0.0/-0.0051	23.622 +/-0.0051	10.160	Carbon Steel	* BIN-01270-HS-C
12.700 (0.500") +/- 0.0025	6.342 +0/- 0.0051	23.876 +/- 0.127		Stainless Steel	BFX-01270-S440
12.700 (0.500") +/- 0.0051	6.342 +/- 0.0051	23.876 +/- 0.1270	10.160	Stainless Steel	BCHK-01270-S440
12.700 (0.500") +/- 0.0051	6.342 +/- 0.0051	23.876 +/- 0.1270	10.160	Tungsten Carbide	BCHK-01270-TC
12.700 (0.500") +/- 0.00051	6.350 +0/-0.0051	24.384 +/-0.0051	7.938	Stainless Steel	BCHK-01270-S440T
12.700 (0.500") +0.0/-0.0051	9.525 +0.0/-0.0051	33.274 +/-0.0051	9.525	Carbon Steel	* BIN-01270-HS-D
15.875 (0.625") +/- 0.0025	7.930 +0/- 0.0051	26.924 +/- 0.127		Stainless Steel	BFX-01588-S440
15.875 (0.625") +/- 0.0051	7.930 +/- 0.0051	26.924 +/- 0.1270	11.430	Stainless Steel	BCHK-01588-S440
15.875 (0.625") +0.0/-0.0051	7.930 +0.0/-0.0051	27.432 +/-0.0051	11.430	Carbon Steel	* BIN-01588-HS-A
15.875 (0.625") +0.0/-0.0051	9.525 +0.0/-0.0051	36.068 +/-0.0051	11.430	Carbon Steel	* BIN-01588-HS-B
19.050 (0.750") +/- 0.0025	9.517 +0/- 0.0051	31.750 +/- 0.127		Stainless Steel	BFX-01905-S440
19.050 (0.750") +/- 0.0127	9.517 +/- 0.0051	31.750 +/- 0.1270	12.700	Stainless Steel	BCHK-01905-S440
19.050 (0.750") +/- 0.0127	9.517 +/- 0.0051	31.750 +/- 0.1270	12.700	Tungsten Carbide	BCHK-01905-TC
19.050 (0.750") +0.0/-0.0051	9.525 +0.0/-0.0051	38.862 +/-0.0051	14.288	Carbon Steel	* BIN-01905-HS
22.225 (0.875") +/- 0.0127	11.105 +/- 0.0051	36.576 +/- 0.1270	15.240	Stainless Steel	BCHK-02223-S440
25.400 (1.000") +/- 0.0025	12.692 +0/- 0.0051	41.148 +/- 0.127		Stainless Steel	BFX-02540-S440
25.400 (1.000") +/- 0.0127	12.692 +/- 0.0051	41.148 +/- 0.1270	17.780	Stainless Steel	BCHK-02540-S440
25.400 (1.000") +0.0/-0.0051	12.700 +0.0/-0.0051	41.656 +/-0.0051	17.780	Carbon Steel	BIN-02540-HS



Stocked or Short Delivery



Usually Available Short Delivery



Long delivery or not in current production

* Large Minimum Quantities

** Available only while stock lasts

Metallic Balls

Diameter (D) mm	Material	Precision Grade	Hardness	Part Number
0.200 (0.008") +/-0.000762	440C Stainless	Grade 3	55-60 Rockwell C	* BL-00020-S440-G3
0.250 (0.010") +/-0.000762	440C Stainless	Grade 3	55-60 Rockwell C	* BL-00025-S440-G3
0.397 (0.016") +/-0.000762	SAE52100 Chrome	Grade 3	60-70 Rockwell C	* BL-00039-CH-G3
0.397 (0.016") +/-0.000762	440C Stainless	Grade 3	55-60 Rockwell C	* BL-00039-S440-G3
0.400 (0.016") +/-0.00711	SAE52100 Chrome	Grade 28	60-70 Rockwell C	* BL-00040-CH-G28
0.500 (0.020") +/-0.00635	Tungsten Carbide	Grade 25	91.5 Rockwell A	* BL-00050-TC-G25
0.500 (0.020") +/-0.000762	440C Stainless	Grade 3	55-60 Rockwell C	* BL-00050-S440-G3
0.600 (0.024") +/-0.000762	440C Stainless	Grade 3	55-60 Rockwell C	* BL-00060-S440-G3
0.650 (0.026") +/-0.000762	440C Stainless	Grade 3	55-60 Rockwell C	* BL-00065-S440-G3
0.700 (0.028") +/-0.00711	SAE52100 Chrome	Grade 28	60-70 Rockwell C	* BL-00070-CH-G28
0.794 (0.031") +/-0.000762	440C Stainless	Grade 3	55-60 Rockwell C	* BL-00079-S440-G3
1.000 (0.039") +/-0.00406	SAE52100 Chrome	Grade 16	60-70 Rockwell C	BL-00100-CH-G16
1.000 (0.039") +/-0.00635	Tungsten Carbide	Grade 25	91.5 Rockwell A	* BL-00100-TC-G25
1.000 (0.039") +/-0.000762	440C Stainless	Grade 3	55-60 Rockwell C	* BL-00100-S440-G3
1.000 (0.039") +/-0.00254	440C Stainless	Grade 10	55-60 Rockwell C	BL-00100-S440-G10
1.150 (0.045") +/-0.000762	440C Stainless	Grade 3	55-60 Rockwell C	* BL-00115-S440-G3
1.191 (0.047") +/-0.000762	SAE52100 Chrome	Grade 3	60-70 Rockwell C	* BL-00119-CH-G3
1.191 (0.047") +/-0.000762	440C Stainless	Grade 3	55-60 Rockwell C	* BL-00119-S440-G3
1.200 (0.047") +/-0.00711	SAE52100 Chrome	Grade 28	60-70 Rockwell C	BL-00120-CH-G28
1.250 (0.049") +/-0.000762	440C Stainless	Grade 3	55-60 Rockwell C	** BL-00125-S440-G3
1.450 (0.057") +/-0.000762	440C Stainless	Grade 3	55-60 Rockwell C	** BL-00145-S440-G3
1.500 (0.059") +/-0.00711	SAE52100 Chrome	Grade 28	60-70 Rockwell C	* BL-00150-CH-G28
1.500 (0.059") +/-0.1270	SAE52100 Chrome	Grade 2000	60-70 Rockwell C	BL-00150-CH-G2000-1KG
1.500 (0.059") +/-0.000762	440C Stainless	Grade 3	55-60 Rockwell C	* BL-00150-S440-G3
1.500 (0.059") +/-0.00254	440C Stainless	Grade 10	55-60 Rockwell C	BL-00150-S440-G10
1.588 (0.063") +/-0.00635	SAE52100 Chrome	Grade 25	60-70 Rockwell C	BL-00159-CH-G25
1.588 (0.063") +/-0.0254	304 Stainless	Grade 100	25-39 Rockwell C	BL-00159-S4-G100
1.588 (0.063") +/-0.0254	316 Stainless	Grade 100	25-39 Rockwell C	BL-00159-S6-G100
1.588 (0.063") +/-0.00254	440C Stainless	Grade 10	55-60 Rockwell C	BL-00159-S440-G10
1.588 (0.063") +/-0.000762	440C Stainless	Grade 3	55-60 Rockwell C	* BL-00159-S440-G3
1.750 (0.069") +/-0.000762	440C Stainless	Grade 3	55-60 Rockwell C	* BL-00175-S440-G3
1.915 (0.075") +/-0.000762	440C Stainless	Grade 3	55-60 Rockwell C	* BL-00192-S440-G3
2.000 (0.079") +/-0.00254	SAE52100 Chrome	Grade 10	60-70 Rockwell C	BL-00200-CH-G10



Stocked or Short Delivery



Usually Available Short Delivery



Long delivery or not in current production

* Large Minimum Quantities

** Available only while stock lasts

Metallic Balls

Diameter (D) mm	Material	Precision Grade	Hardness	Part Number
2.000 (0.079") +/-0.00635	Tungsten Carbide - 6% Nickel Binder	Grade 25	91.5 Rockwell A	BL-00200-TC-G25
2.000 (0.079") +/-0.0254	304 Stainless	Grade 100	25-39 Rockwell C	BL-00200-S4-G100
2.000 (0.079") +/-0.0254	316 Stainless	Grade 100	25-39 Rockwell C	BL-00200-S6-G100
2.000 (0.079") +/-0.0254	316 Stainless	Grade 100	25-39 Rockwell C	BL-00200-S6-G100-B
2.000 (0.079") +/-0.0508	316 Stainless	Grade 400	25-39 Rockwell C	BL-00200-S6-G400-B
2.000 (0.079") +/-0.000762	440C Stainless	Grade 3	55-60 Rockwell C	** BL-00200-S440-G3
2.100 (0.083") +/-0.000762	440C Stainless	Grade 3	55-60 Rockwell C	** BL-00210-S440-G3
2.381 (0.094") +/-0.00635	SAE52100 Chrome	Grade 25	60-70 Rockwell C	* BL-00238-CH-G25
2.381 (0.094") +/-0.00635	Tungsten Carbide	Grade 25	91.5 Rockwell A	BL-00238-TC-G25
2.381 (0.094") +/-0.0254	304 Stainless	Grade 100	25-39 Rockwell C	BL-00238-S4-G100
2.381 (0.094") +/-0.0508	316 Stainless	Grade 200	25-39 Rockwell C	BL-00238-S6-G200
2.381 (0.094") +/-0.00711	440C Stainless	Grade 28	55-60 Rockwell C	BL-00238-S440-G28
2.381 (0.094") +/-0.000762	440C Stainless	Grade 3	55-60 Rockwell C	** BL-00238-S440-G3
2.381 (0.094") +/-0.0127	440C Stainless	Grade 50	55-60 Rockwell C	BL-00238-S440-G50
2.450 (0.096") +/-0.000762	SAE52100 Chrome	Grade 3	60-70 Rockwell C	* BL-00245-CH-G3
2.450 (0.096") +/-0.000762	440C Stainless	Grade 3	55-60 Rockwell C	** BL-00245-S440-G3
2.500 (0.098") +/-0.00711	SAE52100 Chrome	Grade 28	60-70 Rockwell C	* BL-00250-CH-G28
2.500 (0.098") +/-0.01016	440C Stainless	Grade 40	55-60 Rockwell C	** BL-00250-S440-G40
2.500 (0.098") +/-0.000762	440C Stainless	Grade 3	55-60 Rockwell C	* BL-00250-S440-G3
2.500 (0.098") +/-0.00254	440C Stainless	Grade 10	55-60 Rockwell C	BL-00250-S440-G10
2.778 (0.109") +/-0.01016	440C Stainless	Grade 40	55-60 Rockwell C	BL-00278-S440-G40
2.778 (0.109") +/-0.000762	440C Stainless	Grade 3	55-60 Rockwell C	* BL-00278-S440-G3
3.000 (0.118") +/-0.00711	SAE52100 Chrome	Grade 28	60-70 Rockwell C	BL-00300-CH-G28
3.000 (0.118") +/-0.00635	Tungsten Carbide	Grade 25	91.5 Rockwell A	BL-00300-TC-G25
3.000 (0.118") +/-0.0254	Ti-Gr23/Ti-6AL4V-ELI	Grade 100	35 Rockwell C	BL-00300-T23-G100
3.000 (0.118") +/-0.0508	304 Stainless	Grade 200	25-39 Rockwell C	BL-00300-S4-G200
3.000 (0.118") +/-0.0508	316 Stainless	Grade 200	25-39 Rockwell C	BL-00300-S6-G200
3.000 (0.118") +/-0.00406	440C Stainless	Grade 16	55-60 Rockwell C	BL-00300-S440-G16
3.175 (0.125") +/-0.00635	SAE52100 Chrome	Grade 25	60-70 Rockwell C	BL-00318-CH-G25
3.175 (0.125") +/-0.00635	Tungsten Carbide	Grade 25	91.5 Rockwell A	BL-00318-TC-G25
3.175 (0.125") +/-0.1270	Phosphor Bronze	Grade 1000	75-98 Rockwell B	BL-00318-PB-G1000
3.175 (0.125") +/-0.0254	304 Stainless	Grade 100	25-39 Rockwell C	BL-00318-S4-G100



Stocked or Short Delivery



Usually Available Short Delivery



Long delivery or not in current production

* Large Minimum Quantities

** Available only while stock lasts

Metallic Balls

Diameter (D) mm	Material	Precision Grade	Hardness	Part Number
3.175 (0.125") +/-0.0254	316 Stainless	Grade 100	25-39 Rockwell C	BL-00318-S6-G100
3.175 (0.125") +/-0.00508	420 Stainless	Grade 20	55-60 Rockwell C	BL-00318-S420-G28
3.175 (0.125") +/-0.00508	440C Stainless	Grade 20	55-60 Rockwell C	BL-00318-S440-G20
3.400 (0.134") +/-0.00635	SAE52100 Chrome	Grade 25	60-70 Rockwell C	BL-00340-CH-G25
3.500 (0.138") +/-0.00711	SAE52100 Chrome	Grade 28	60-70 Rockwell C	BL-00350-CH-G28
3.500 (0.138") +/-0.00711	440C Stainless	Grade 28	55-60 Rockwell C	BL-00350-S440-G28
3.969 (0.156") +/-0.0061	Tungsten Carbide	Grade 24	91.5 Rockwell A	BL-00397-TC-G24
3.969 (0.156") +/-0.00635	SAE52100 Chrome	Grade 25	60-70 Rockwell C	BL-00397-CH-G25
3.969 (0.156") +/-0.0254	304 Stainless	Grade 100	25-39 Rockwell C	BL-00397-S4-G100
3.969 (0.156") +/-0.0254	316 Stainless	Grade 100	25-39 Rockwell C	BL-00397-S6-G100
3.969 (0.156") +/-0.0127	440C Stainless	Grade 50	55-60 Rockwell C	BL-00397-S440-G50
4.000 (0.157") +/-0.0254	SAE52100 Chrome	Grade 100	60-70 Rockwell C	BL-00400-CH-G100
4.000 (0.157") +/-0.00711	SAE52100 Chrome	Grade 28	60-70 Rockwell C	* BL-00400-CH-G28
4.000 (0.157") +/-0.00635	Tungsten Carbide	Grade 25	91.5 Rockwell A	BL-00400-TC-G25
4.000 (0.157") +/-0.0254	Ti-Gr23/Ti-6AL4V-ELI	Grade 100	35 Rockwell C	BL-00400-T23-G100
4.000 (0.157") +/-0.0254	304 Stainless	Grade 100	25-39 Rockwell C	BL-00400-S4-G100
4.000 (0.157") +/-0.0254	316 Stainless	Grade 100	25-39 Rockwell C	BL-00400-S6-G100
4.000 (0.157") +/-0.0508	316 Stainless	Grade 200	25-39 Rockwell C	BL-00400-S6-G200
4.000 (0.157") +/-0.0254	316L Stainless	Grade 100	25-39 Rockwell C	BL-00400-S6L-G100
4.000 (0.157") +/-0.00406	440C Stainless	Grade 16	55-60 Rockwell C	BL-00400-S440-G16
4.500 (0.177") +/-0.00711	SAE52100 Chrome	Grade 28	60-70 Rockwell C	BL-00450-CH-G28
4.500 (0.177") +/-0.0254	316 Stainless	Grade 100	25-39 Rockwell C	BL-00450-S6-G100
4.762 (0.187") +/-0.1270	Phosphor Bronze	Grade 1000	75-98 Rockwell B	BL-00476-PB-G1000
4.763 (0.188") +/-0.00635	SAE52100 Chrome	Grade 25	60-70 Rockwell C	* BL-00476-CH-G25
4.763 (0.188") +/-0.00508	SAE52100 Chrome	Grade 20	60-70 Rockwell C	BL-00476-CH-G20
4.763 (0.188") +/-0.00635	Tungsten Carbide	Grade 25	91.5 Rockwell A	BL-00476-TC-G25
4.763 (0.188") +/-0.0254	304 Stainless	Grade 100	25-39 Rockwell C	BL-00476-S4-G100
4.763 (0.188") +/-0.0508	316 Stainless	Grade 200	25-39 Rockwell C	BL-00476-S6-G200
4.763 (0.188") +/-0.0127	440C Stainless	Grade 50	55-60 Rockwell C	* BL-00476-S440-G50
4.763 (0.188") +/-0.00711	440C Stainless	Grade 28	55-60 Rockwell C	BL-00476-S440-G28
5.000 (0.197") +/-0.00762	SAE52100 Chrome	Grade 3	60-70 Rockwell C	* BL-00500-CH-G3
5.000 (0.197") +/-0.00711	SAE52100 Chrome	Grade 28	60-70 Rockwell C	BL-00500-CH-G28
5.000 (0.197") +/-0.0254	Ti-Gr23/Ti-6AL4V-ELI	Grade 100	35 Rockwell C	BL-00500-T23-G100



Stocked or Short Delivery



Usually Available Short Delivery



Long delivery or not in current production

* Large Minimum Quantities

** Available only while stock lasts

Metallic Balls

Diameter (D) mm	Material	Precision Grade	Hardness	Part Number
5.000 (0.197") +/-0.0254	304 Stainless	Grade 100	25-39 Rockwell C	BL-00500-S4-G100
5.000 (0.197") +/-0.0508	316 Stainless	Grade 200	25-39 Rockwell C	BL-00500-S6-G200
5.000 (0.197") +/-0.00406	440C Stainless	Grade 16	55-60 Rockwell C	BL-00500-S440-G16
5.500 (0.217") +/-0.00711	SAE52100 Chrome	Grade 28	60-70 Rockwell C	* BL-00550-CH-G28
5.556 (0.219") +/-0.00635	SAE52100 Chrome	Grade 25	60-70 Rockwell C	BL-00556-CH-G25
5.556 (0.219") +/-0.0254	304 Stainless	Grade 100	25-39 Rockwell C	BL-00556-S4-G100
5.556 (0.219") +/-0.0254	316 Stainless	Grade 100	25-39 Rockwell C	BL-00556-S6-G100
5.556 (0.219") +/-0.00254	440C Stainless	Grade 10	55-60 Rockwell C	BL-00556-S440-G40
6.000 (0.236") +/-0.0508	SAE52100 Chrome	Grade 200	60-70 Rockwell C	BL-00600-CH-G200
6.000 (0.236") +/-0.00635	Tungsten Carbide	Grade 25	91.5 Rockwell A	BL-00600-TC-G25
6.000 (0.236") +/-0.0254	Ti-Gr23/Ti-6AL4V-ELI	Grade 100	35 Rockwell C	BL-00600-T23-G100
6.000 (0.236") +/-0.0254	304 Stainless	Grade 100	25-39 Rockwell C	BL-00600-S4-G100
6.000 (0.236") +/-0.00406	440C Stainless	Grade 16	55-60 Rockwell C	BL-00600-S440-G16
6.000 (0.236") +/-0.01016	440C Stainless	Grade 40	55-60 Rockwell C	BL-00600-S440-G40
6.350 (0.250") +/-0.00635	SAE52100 Chrome	Grade 25	60-70 Rockwell C	* BL-00635-CH-G25
6.350 (0.250") +/-0.00508	SAE52100 Chrome	Grade 20	60-70 Rockwell C	BL-00635-CH-G20
6.350 (0.250") +/-0.00635	Tungsten Carbide	Grade 25	91.5 Rockwell A	BL-00635-TC-G25
6.350 (0.250") +/-0.1270	Phosphor Bronze	Grade 1000	75-98 Rockwell B	BL-00635-PB-G1000
6.350 (0.250") +/-0.0254	304 Stainless	Grade 100	25-39 Rockwell C	BL-00635-S4-G100
6.350 (0.250") +/-0.0254	316 Stainless	Grade 100	25-39 Rockwell C	BL-00635-S6-G100
6.350 (0.250") +/-0.00711	440C Stainless	Grade 28	55-60 Rockwell C	BL-00635-S440-G28
6.500 (0.256") +/-0.00711	SAE52100 Chrome	Grade 28	60-70 Rockwell C	* BL-00650-CH-G28
7.000 (0.276") +/-0.01016	SAE52100 Chrome	Grade 40	60-70 Rockwell C	BL-00700-CH-G40
7.000 (0.276") +/-0.00406	440C Stainless	Grade 16	55-60 Rockwell C	* BL-00700-S440-G16
7.144 (0.281") +/-0.00711	SAE52100 Chrome	Grade 28	60-70 Rockwell C	BL-00714-CH-G28
7.144 (0.281") +/-0.0254	304 Stainless	Grade 100	25-39 Rockwell C	BL-00714-S4-G100
7.144 (0.281") +/-0.00711	440C Stainless	Grade 28	55-60 Rockwell C	BL-00714-S440-G28
7.500 (0.295") +/-0.00711	SAE52100 Chrome	Grade 28	60-70 Rockwell C	* BL-00750-CH-G28
7.938 (0.313") +/-0.00711	SAE52100 Chrome	Grade 28	60-70 Rockwell C	* BL-00794-CH-G28
7.938 (0.313") +/-0.00635	SAE52100 Chrome	Grade 25	60-70 Rockwell C	* BL-00794-CH-G25
7.938 (0.313") +/-0.1270	Phosphor Bronze	Grade 1000	75-98 Rockwell B	BL-00794-PB-G1000
7.938 (0.313") +/-0.0508	304 Stainless	Grade 200	25-39 Rockwell C	BL-00794-S4-G200
7.938 (0.313") +/-0.0508	316 Stainless	Grade 200	25-39 Rockwell C	BL-00794-S6-G200



Stocked or Short Delivery



Usually Available Short Delivery



Long delivery or not in current production

* Large Minimum Quantities

** Available only while stock lasts

Metallic Balls

Diameter (D) mm	Material	Precision Grade	Hardness	Part Number
7.938 (0.313") +/-0.00711	440C Stainless	Grade 28	55-60 Rockwell C	BL-00794-S440-G28
8.000 (0.315") +/-0.00711	440C Stainless	Grade 28	55-60 Rockwell C	* BL-00800-S440-G28
8.000 (0.315") +/-0.00711	SAE52100 Chrome	Grade 28	60-70 Rockwell C	BL-00800-CH-G28
8.000 (0.315") +/-0.0254	Ti-Gr23/Ti-6AL4V-ELI	Grade 100	35 Rockwell C	BL-00800-T23-G100
8.000 (0.315") +/-0.0508	316 Stainless	Grade 200	25-39 Rockwell C	BL-00800-S6-G200
8.500 (0.335") +/-0.00711	SAE52100 Chrome	Grade 28	60-70 Rockwell C	* BL-00850-CH-G28
8.731 (0.344") +/-0.00711	SAE52100 Chrome	Grade 28	60-70 Rockwell C	* BL-00873-CH-G28
8.731 (0.344") +/-0.0508	304 Stainless	Grade 200	25-39 Rockwell C	BL-00873-S4-G200
9.000 (0.354") +/-0.00711	SAE52100 Chrome	Grade 28	60-70 Rockwell C	BL-00900-CH-G28
9.000 (0.354") +/-0.00711	440C Stainless	Grade 28	55-60 Rockwell C	BL-00900-S440-G28
9.525 (0.375") +/-0.00635	SAE52100 Chrome	Grade 25	60-70 Rockwell C	BL-00953-CH-G25
9.525 (0.375") +/-0.00635	Tungsten Carbide	Grade 25	91.5 Rockwell A	BL-00953-TC-G25
9.525 (0.375") +/-0.0254	304 Stainless	Grade 100	25-39 Rockwell C	BL-00953-S4-G100
9.525 (0.375") +/-0.0254	316 Stainless	Grade 100	25-39 Rockwell C	BL-00953-S6-G100
9.525 (0.375") +/-0.00508	440C Stainless	Grade 20	55-60 Rockwell C	BL-00953-S440-G20
9.525 (0.375") +/-0.01016	440C Stainless	Grade 40	55-60 Rockwell C	BL-00953-S440-G40
10.000 (0.394") +/-0.01016	SAE52100 Chrome	Grade 40	60-70 Rockwell C	BL-01000-CH-G40
10.000 (0.394") +/-0.00635	Tungsten Carbide	Grade 25	91.5 Rockwell A	BL-01000-TC-G25
10.000 (0.394") +/-0.0254	Ti-Gr23/Ti-6AL4V-ELI	Grade 100	35 Rockwell C	BL-01000-T23-G100
10.000 (0.394") +/-0.0508	316 Stainless	Grade 200	25-39 Rockwell C	BL-01000-S6-G200
10.000 (0.394") +/-0.01016	420 Stainless	Grade 40	55-60 Rockwell C	BL-01000-S420-G40
10.000 (0.394") +/-0.01016	440C Stainless	Grade 40	55-60 Rockwell C	BL-01000-S440-G40
10.319 (0.406") +/-0.00711	SAE52100 Chrome	Grade 28	60-70 Rockwell C	* BL-01032-CH-G28
11.000 (0.433") +/-0.00711	SAE52100 Chrome	Grade 28	60-70 Rockwell C	* BL-01100-CH-G28
11.000 (0.433") +/-0.00406	440C Stainless	Grade 16	55-60 Rockwell C	BL-01100-S440-G16
11.112 (0.437") +/-0.00711	SAE52100 Chrome	Grade 28	60-70 Rockwell C	BL-01111-CH-G28
11.113 (0.438") +/-0.0508	316 Stainless	Grade 200	25-39 Rockwell C	BL-01111-S6-G200
11.500 (0.453") +/-0.00711	SAE52100 Chrome	Grade 28	60-70 Rockwell C	* BL-01150-CH-G28
11.906 (0.469") +/-0.0127	SAE52100 Chrome	Grade 50	60-70 Rockwell C	BL-01191-CH-G50
12.000 (0.472") +/-0.00711	SAE52100 Chrome	Grade 28	60-70 Rockwell C	* BL-01200-CH-G28
12.000 (0.472") +/-0.0254	316 Stainless	Grade 100	25-39 Rockwell C	BL-01200-S6-G100
12.000 (0.472") +/-0.00406	440C Stainless	Grade 16	55-60 Rockwell C	BL-01200-S440-G16
12.500 (0.492") +/-0.00711	SAE52100 Chrome	Grade 28	60-70 Rockwell C	* BL-01250-CH-G28



Stocked or Short Delivery



Usually Available Short Delivery



Long delivery or not in current production

* Large Minimum Quantities

** Available only while stock lasts

Metallic Balls

Diameter (D) mm	Material	Precision Grade	Hardness	Part Number
12.700 (0.500") +/-0.00635	SAE52100 Chrome	Grade 25	60-70 Rockwell C	BL-01270-CH-G25
12.700 (0.500") +/-0.1270	Phosphor Bronze	Grade 1000	75-98 Rockwell B	BL-01270-PB-G100
12.700 (0.500") +/-0.0254	304 Stainless	Grade 100	25-39 Rockwell C	BL-01270-S4-G100
12.700 (0.500") +/-0.0254	316 Stainless	Grade 100	25-39 Rockwell C	BL-01270-S6-G100
12.700 (0.500") +/-0.0254	316L Grade Stainless	Grade 100	25-39 Rockwell C	BL-01270-S6L-G100
12.700 (0.500") +/-0.00406	440C Stainless	Grade 16	55-60 Rockwell C	* BL-01270-S440-G16
12.700 (0.500") +/-0.0127	440C Stainless	Grade 50	55-60 Rockwell C	BL-01270-S440-G50
14.288 (0.563") +/-0.0508	304 Stainless	Grade 200	25-39 Rockwell C	* BL-01429-S4-G200
15.000 (0.591") +/-0.00711	SAE52100 Chrome	Grade 28	60-70 Rockwell C	BL-01500-CH-G28
15.000 (0.591") +/-0.0254	304 Stainless	Grade 100	25-39 Rockwell C	BL-01500-S4-G100
15.000 (0.591") +/-0.0254	316 Stainless	Grade 100	25-39 Rockwell C	BL-01500-S6-G100
15.000 (0.591") +/-0.01016	420 Stainless	Grade 40	55-60 Rockwell C	BL-01500-S420-G40
15.875 (0.625") +/-0.01016	SAE52100 Chrome	Grade 40	60-70 Rockwell C	BL-01588-CH-G40
15.875 (0.625") +/-0.0254	304 Stainless	Grade 100	25-39 Rockwell C	BL-01588-S4-G100
15.875 (0.625") +/-0.0254	316 Stainless	Grade 100	25-39 Rockwell C	BL-01588-S6-G100
15.875 (0.625") +/-0.0127	420 Stainless	Grade 50	55-60 Rockwell C	BL-01588-S420-G50
15.875 (0.625") +/-0.0127	440C Stainless	Grade 50	55-60 Rockwell C	BL-01588-S440-G50
16.000 (0.630") +/-0.0254	316 Stainless	Grade 100	25-39 Rockwell C	BL-01600-S6-G100
17.463 (0.688") +/-0.0254	304 Stainless	Grade 100	25-39 Rockwell C	* BL-01746-S4-G100
18.000 (0.709") +/-0.0254	304 Stainless	Grade 100	25-39 Rockwell C	BL-01800-S4-G100
18.000 (0.709") +/-0.0508	316 Stainless	Grade 100	25-39 Rockwell C	BL-01800-S6-G100
18.000 (0.709") +/-0.0508	316L Stainless	Grade 100	25-39 Rockwell C	BL-01800-S6L-G100
18.000 (0.709") +/-0.0127	440C Stainless	Grade 50	55-60 Rockwell C	BL-01800-S440-G50
19.050 (0.750") +/-0.00127	SAE52100 Chrome	Grade 50	60-70 Rockwell C	BL-01905-CH-G50
19.050 (0.750") +/-0.00635	Tungsten Carbide	Grade 25	91.5 Rockwell A	BL-01905-TC-G25
19.050 (0.750") +/-0.0254	304 Stainless	Grade 100	25-39 Rockwell C	BL-01905-S4-G100
19.050 (0.750") +/-0.0508	316 Stainless	Grade 200	25-39 Rockwell C	BL-01905-S6-G200
19.050 (0.750") +/-0.0127	440C Stainless	Grade 50	55-60 Rockwell C	BL-01905-S440-G50
20.000 (0.787") +/-0.0508	304 Stainless	Grade 200	25-39 Rockwell C	BL-02000-S4-G200
20.000 (0.787") +/-0.0508	316 Stainless	Grade 200	25-39 Rockwell C	BL-02000-S6-G200
20.000 (0.787") +/-0.0508	420 Stainless	Grade 50	55-60 Rockwell C	BL-02000-S420-G50
22.000 (0.866") +/-0.01016	SAE52100 Chrome	Grade 40	60-70 Rockwell C	BL-02200-CH-G40
22.223 (0.875") +/-0.0508	316 Stainless	Grade 100	25-39 Rockwell C	BL-02223-S6-G100



Stocked or Short Delivery



Usually Available Short Delivery



Long delivery or not in current production

* Large Minimum Quantities

** Available only while stock lasts

Metallic Balls

Diameter (D) mm	Material	Precision Grade	Hardness	Part Number
22.225 (0.875") +/-0.01016	SAE52100 Chrome	Grade 40	60-70 Rockwell C	BL-02223-CH-G40
22.225 (0.875") +/-0.0254	304 Stainless	Grade 100	25-39 Rockwell C	BL-02223-S4-G100
22.225 (0.875") +/-0.00635	Tungsten Carbide	Grade 25	91.5 Rockwell A	BL-02223-TC-G25
23.813 (0.938") +/-0.01016	SAE52100 Chrome	Grade 40	60-70 Rockwell C	BL-02381-CH-G40
25.000 (0.984") +/-0.01016	420 Stainless	Grade 40	55-60 Rockwell C	BL-02500-S420-G40
25.400 (1.000") +/-0.0254	304 Stainless	Grade 100	25-39 Rockwell C	BL-02540-S4-G100
25.400 (1.000") +/-0.0508	316 Stainless	Grade 100	25-39 Rockwell C	BL-02540-S6-G100
25.400 (1.000") +/-0.0508	440C Stainless	Grade 200	55-60 Rockwell C	BL-02540-S440-G200
25.400 (1.000") +/-0.0508	420 Stainless	Grade 200	55-60 Rockwell C	BL-02540-S420-G200
26.988 (1.063") +/-0.01016	SAE52100 Chrome	Grade 40	60-70 Rockwell C	BL-02699-CH-G40
28.000 (1.102") +/-0.01016	SAE52100 Chrome	Grade 40	60-70 Rockwell C	BL-02800-CH-G40
30.000 (1.181") +/-0.0508	316 Stainless	Grade 200	25-39 Rockwell C	BL-03000-S6-G200
30.163 (1.188") +/-0.01016	SAE52100 Chrome	Grade 40	60-70 Rockwell C	BL-03016-CH-G40
31.750 (1.250") +/-0.01016	SAE52100 Chrome	Grade 40	60-70 Rockwell C	BL-03175-CH-G40
31.750 (1.250") +/-0.0508	304 Stainless	Grade 200	25-39 Rockwell C	BL-03175-S4-G200
31.750 (1.250") +/-0.0508	316 Stainless	Grade 100	25-39 Rockwell C	BL-03175-S6-G100
35.000 (1.378") +/-0.01016	SAE52100 Chrome	Grade 40	60-70 Rockwell C	BL-03500-CH-G40
36.513 (1.438") +/-0.01016	SAE52100 Chrome	Grade 40	60-70 Rockwell C	BL-03651-CH-G40
38.100 (1.500") +/-0.0127	SAE52100 Chrome	Grade 50	60-70 Rockwell C	BL-03810-CH-G50
38.100 (1.500") +/-0.00635	Tungsten Carbide	Grade 25	91.5 Rockwell A	BL-03810-TC-G25
40.000 (1.575") +/-0.0508	316 Stainless	Grade 200	25-39 Rockwell C	BL-04000-S6-G200
44.450 (1.750") +/-0.0127	SAE52100 Chrome	Grade 50	60-70 Rockwell C	BL-04445-CH-G50
44.450 (1.750") +/-0.0508	316 Stainless	Grade 200	25-39 Rockwell C	BL-04445-S6-G200
44.450 (1.750") +/-0.0127	440C Stainless	Grade 50	55-60 Rockwell C	BL-04445-S440-G50
50.000 (1.969") +/-0.01016	SAE52100 Chrome	Grade 40	60-70 Rockwell C	BL-05000-CH-G40
50.800 (2.000") +/-0.0508	SAE52100 Chrome	Grade 200	55-60 Rockwell C	BL-05080-CH-G200
50.800 (2.000") +/-0.0508	440C Stainless	Grade 200	55-60 Rockwell C	BL-05080-S440-G200
50.800 (2.000") +/-0.0508	420 Stainless	Grade 200	55-60 Rockwell C	BL-05080-S420-G200
69.85 (2.750") +/-0.0508	440C Stainless	Grade 200	55-60 Rockwell C	BL-06985-S440-G200
76.200 (3.000") +/-0.0508	304 Stainless	Grade 200	55-60 Rockwell C	BL-07620-S304-G200
76.200 (3.000") +/-0.0508	440C Stainless	Grade 200	55-60 Rockwell C	BL-07620-S440-G200
100.00 (3.937") +/-0.0508	SAE52100 Chrome	Grade 200	60-70 Rockwell C	BL-10000-CH-G200



Stocked or Short Delivery



Usually Available Short Delivery



Long delivery or not in current production

* Large Minimum Quantities

** Available only while stock lasts

Metallic Balls - Bored

Diameter (D) mm	Bore (B) mm	Width (W) mm	Flat Diameter (d1) mm		Part Number
7.938 (0.313")	3.000	6.000	5.100	Chrome Steel	* BLB-00794-00300-SUJ
9.525 (0.375")	4.000	7.000	7.400	Chrome Steel	* BLB-00953-00400-SUJ
11.112 (0.437")	5.000	8.000	7.710	Chrome Steel	BLB-01111-00500-SUJ
12.700 (0.500")	6.000	9.000	8.960	Chrome Steel	BLB-01270-00600-SUJ
15.875 (0.625")	8.000	12.000	10.390	Chrome Steel	* BLB-01588-00800-SUJ
19.050 (0.750")	10.000	14.000	12.920	Chrome Steel	* BLB-01905-01000-SUJ
22.225 (0.875")	12.000	16.000	15.430	Chrome Steel	* BLB-02223-01200-SUJ
25.400 (1.000")	14.000	19.000	16.860	Chrome Steel	* BLB-02540-01400-SUJ
28.575 (1.125")	16.000	21.000	19.390	Chrome Steel	* BLB-02858-01600-SUJ
31.750 (1.250")	18.000	23.000	21.890	Chrome Steel	* BLB-03175-01800-SUJ
34.925 (1.375")	20.000	25.000	24.380	Chrome Steel	* BLB-03493-02000-SUJ
38.100 (1.500")	22.000	28.000	25.840	Chrome Steel	* BLB-03810-02200-SUJ
42.863 (1.688")	25.000	31.000	29.600	Chrome Steel	* BLB-04286-02500-SUJ
50.800 (2.000")	30.000	37.000	34.810	Chrome Steel	* BLB-05080-03000-SUJ

Plastic Balls

Diameter (D) mm	Material	Precision Grade	Hardness		Part Number
0.79 (0.031") +/-0.051	Acrylic	Grade 3	132 Rockwell R		BL-00079-ACR
0.79 (0.031") +/-0.051	PTFE	Grade 1	68 Rockwell R		BL-00079-PTF
1.59 (0.063") +/-0.051	Nylon (Polyamide 6/6)	Grade 2	108 Rockwell R		BL-00159-NY
1.59 (0.063") +/-0.051	Acrylic	Grade 3	132 Rockwell R		BL-00159-ACR
1.59 (0.063") +/-0.051	PTFE	Grade 1	68 Rockwell R		BL-00159-PTF
2.38 (0.094") +/-0.051	PTFE	Grade 1	68 Rockwell R		BL-00238-PTF
2.38 (0.094") +/-0.051	Nylon (Polyamide 6/6)	Grade 2	108 Rockwell R		BL-00238-NY
2.38 (0.094") +/-0.051	Acetal	Grade 1	118 Rockwell R		BL-00238-AC
3.00 (0.118") +/-0.051	Acrylic	Grade 3	132 Rockwell R		BL-00300-ACR
3.18 (0.125") +/-0.051	Nylon (Polyamide 6/6)	Grade 2	108 Rockwell R		BL-00318-NY
3.18 (0.125") +/-0.051	Acetal	Grade 1	118 Rockwell R		BL-00318-AC
3.18 (0.125") +/-0.051	Acrylic	Grade 3	132 Rockwell R		BL-00318-ACR
3.18 (0.125") +/-0.051	PTFE	Grade 1	68 Rockwell R		BL-00318-PTF
3.18 (0.125") +/-0.051	Torlon (Polyamide-imide)	Grade II	Rockwell E86 or M109-119		BL-00318-TO
3.18 (0.125") +/-0.051	Polypropylene	Grade 2	86 Rockwell R		BL-00318-PP
3.97 (0.156") +/-0.051	Nylon (Polyamide 6/6)	Grade 2	108 Rockwell R		BL-00397-NY
3.97 (0.156") +/-0.051	Acetal	Grade 1	118 Rockwell R		BL-00397-AC
3.97 (0.156") +/-0.051	Acrylic	Grade 3	132 Rockwell R		BL-00397-ACR
3.97 (0.156") +/-0.051	PTFE	Grade 1	68 Rockwell R		BL-00397-PTF
3.97 (0.156") +/-0.051	Torlon (Polyamide-imide)	Grade II	Rockwell E86 or M109-119		BL-00397-TO
3.97 (0.156") +/-0.051	Polypropylene	Grade 2	86 Rockwell R		BL-00397-PP
4.76 (0.187") +/-0.051	PVC	Grade 2	114 Rockwell R		BL-00476-PVC
4.76 (0.187") +/-0.051	Polypropylene	Grade 2	86 Rockwell R		BL-00476-PP



Stocked or Short Delivery



Usually Available Short Delivery



Long delivery or not in current production

* Large Minimum Quantities

** Available only while stock lasts

Plastic Balls

Diameter (D) mm	Material	Precision Grade	Hardness	Part Number
4.76 (0.187") +/-0.051	Torlon (Polyamide-imide)	Grade II	Rockwell E86 or M109-119	BL-00476-TO
4.76 (0.188") +/-0.051	Nylon (Polyamide 6/6)	Grade 2	108 Rockwell R	BL-00476-NY
4.76 (0.188") +/-0.051	Acetal	Grade 1	118 Rockwell R	BL-00476-AC
4.76 (0.188") +/-0.051	Acrylic	Grade 3	132 Rockwell R	BL-00476-ACR
4.76 (0.188") +/-0.051	PTFE	Grade 1	68 Rockwell R	BL-00476-PTF
5.00 (0.197") +/-0.051	Torlon (Polyamide-imide)	Grade II	Rockwell E86 or M109-119	BL-00500-TO
5.56 (0.219") +/-0.051	Nylon (Polyamide 6/6)	Grade 2	108 Rockwell R	* BL-00556-NY
5.56 (0.219") +/-0.051	Acetal	Grade 1	118 Rockwell R	BL-00556-AC
5.56 (0.219") +/-0.051	PTFE	Grade 1	68 Rockwell R	BL-00556-PTF
5.56 (0.219") +/-0.051	Torlon (Polyamide-imide)	Grade II	Rockwell E86 or M109-119	BL-00556-TO
5.56 (0.219") +/-0.051	Polypropylene	Grade 2	86 Rockwell R	BL-00556-PP
6.00 (0.236") +/-0.051	Torlon (Polyamide-imide)	Grade II	Rockwell E86 or M109-119	BL-00600-TO
6.35 (0.250") +/-0.051	Nylon (Polyamide 6/6)	Grade 2	108 Rockwell R	BL-00635-NY
6.35 (0.250") +/-0.051	PVC	Grade 2	114 Rockwell R	BL-00635-PVC
6.35 (0.250") +/-0.051	Acetal	Grade 1	118 Rockwell R	BL-00635-AC
6.35 (0.250") +/-0.051	Acrylic	Grade 3	132 Rockwell R	BL-00635-ACR
6.35 (0.250") +/-0.051	PTFE	Grade 1	68 Rockwell R	BL-00635-PTF
6.35 (0.250") +/-0.051	Polypropylene	Grade 2	86 Rockwell R	BL-00635-PP
6.35 (0.250") +/-0.051	Torlon (Polyamide-imide)	Grade II	Rockwell E86 or M109-119	BL-00635-TO
7.14 (0.281") +/-0.051	Nylon (Polyamide 6/6)	Grade 2	108 Rockwell R	** BL-00714-NY
7.14 (0.281") +/-0.051	Acetal	Grade 2	118 Rockwell R	BL-00714-AC
7.14 (0.281") +/-0.051	PTFE	Grade 1	68 Rockwell R	BL-00714-PTF
7.94 (0.313") +/-0.051	Nylon (Polyamide 6/6)	Grade 2	108 Rockwell R	BL-00794-NY
7.94 (0.313") +/-0.051	Acetal	Grade 2	118 Rockwell R	BL-00794-AC
7.94 (0.313") +/-0.051	Acrylic	Grade 3	132 Rockwell R	BL-00794-ACR
7.94 (0.313") +/-0.051	PTFE	Grade 1	68 Rockwell R	BL-00794-PTF
7.94 (0.313") +/-0.051	Polypropylene	Grade 2	86 Rockwell R	BL-00794-PP
7.94 (0.313") +/-0.051	Torlon (Polyamide-imide)	Grade II	Rockwell E86 or M109-119	BL-00794-TO
8.73 (0.344") +/-0.051	Nylon (Polyamide 6/6)	Grade 2	108 Rockwell R	** BL-00873-NY
9.53 (0.375") +/-0.051	Nylon (Polyamide 6/6)	Grade 2	108 Rockwell R	** BL-00953-NY
9.53 (0.375") +/-0.051	Acetal	Grade 2	118 Rockwell R	BL-00953-AC
9.53 (0.375") +/-0.051	Acrylic	Grade 3	132 Rockwell R	BL-00953-ACR
9.53 (0.375") +/-0.051	PTFE	Grade 1	68 Rockwell R	BL-00953-PTF



Stocked or Short Delivery



Usually Available Short Delivery



Long delivery or not in current production

* Large Minimum Quantities

** Available only while stock lasts

Plastic Balls

Diameter (D) mm	Material	Precision Grade	Hardness	Part Number
9.53 (0.375") +/-0.051	Torlon (Polyamide-imide)	Grade II	Rockwell E86 or M109-119	BL-00953-TO
9.53 (0.375") +/-0.051	Polypropylene	Grade 2	86 Rockwell R	BL-00953-PP
11.11 (0.437") +/-0.051	Acetal	Grade 2	118 Rockwell R	BL-01111-AC
11.11 (0.437") +/-0.051	Nylon (Polyamide 6/6)	Grade 2	108 Rockwell R	** BL-01111-NY
11.11 (0.438") +/-0.051	Acrylic	Grade 3	132 Rockwell R	BL-01111-ACR
11.11 (0.438") +/-0.051	PTFE	Grade 1	68 Rockwell R	* BL-01111-PTF
12.00 (0.472") +/-0.051	Acetal	Grade 2	118 Rockwell R	* BL-01200-AC
12.00 (0.472") +/-0.051	Acrylic	Grade 3	132 Rockwell R	BL-01200-ACR
12.70 (0.500") +/-0.051	Nylon (Polyamide 6/6)	Grade 2	108 Rockwell R	BL-01270-NY
12.70 (0.500") +/-0.051	PVC	Grade 2	114 Rockwell R	BL-01270-PVC
12.70 (0.500") +/-0.051	Acetal	Grade 2	118 Rockwell R	BL-01270-AC
12.70 (0.500") +/-0.051	Acrylic	Grade 3	132 Rockwell R	BL-01270-ACR
12.70 (0.500") +/-0.051	PTFE	Grade 1	68 Rockwell R	BL-01270-PTF
12.70 (0.500") +/-0.051	Polypropylene	Grade 2	86 Rockwell R	BL-01270-PP
12.70 (0.500") +/-0.051	Torlon (Polyamide-imide)	Grade II	Rockwell E86 or M109-119	BL-01270-TO
14.29 (0.563") +/-0.051	Nylon (Polyamide 6/6)	Grade 2	108 Rockwell R	** BL-01429-NY
14.29 (0.563") +/-0.051	Acetal	Grade 2	118 Rockwell R	BL-01429-AC
14.29 (0.563") +/-0.051	Acrylic	Grade 3	132 Rockwell R	BL-01429-ACR
14.29 (0.563") +/-0.051	PTFE	Grade 1	68 Rockwell R	BL-01429-PTF
15.88 (0.625") +/-0.051	Nylon (Polyamide 6/6)	Grade 2	108 Rockwell R	** BL-01588-NY
15.88 (0.625") +/-0.051	Acetal	Grade 2	118 Rockwell R	BL-01588-AC
15.88 (0.625") +/-0.051	Acrylic	Grade 3	132 Rockwell R	BL-01588-ACR
15.88 (0.625") +/-0.051	PTFE	Grade 1	68 Rockwell R	BL-01588-PTF
15.88 (0.625") +/-0.051	Polypropylene	Grade 2	86 Rockwell R	BL-01588-PP
17.46 (0.687") +/-0.051	PVC	Grade 2	114 Rockwell R	BL-01746-PVC
17.46 (0.687") +/-0.051	Polypropylene	Grade 2	86 Rockwell R	BL-01746-PP
17.46 (0.687") +/-0.051	Nylon (Polyamide 6/6)	Grade 2	108 Rockwell R	* BL-01746-NY
17.46 (0.687") +/-0.051	Acrylic	Grade 3	132 Rockwell R	BL-01746-ACR
19.05 (0.750") +/-0.051	Nylon (Polyamide 6/6)	Grade 2	108 Rockwell R	* BL-01905-NY
19.05 (0.750") +/-0.051	PVC	Grade 2	114 Rockwell R	BL-01905-PVC
19.05 (0.750") +/-0.051	Acetal	Grade 2	118 Rockwell R	BL-01905-AC
19.05 (0.750") +/-0.051	Acrylic	Grade 3	132 Rockwell R	BL-01905-ACR
19.05 (0.750") +/-0.051	PTFE	Grade 1	68 Rockwell R	BL-01905-PTF



Stocked or Short Delivery



Usually Available Short Delivery



Long delivery or not in current production

* Large Minimum Quantities

** Available only while stock lasts

Plastic Balls

Diameter (D) mm	Material	Precision Grade	Hardness	Part Number
19.05 (0.750") +/-0.051	Polypropylene	Grade 2	86 Rockwell R	BL-01905-PP
20.64 (0.813") +/-0.051	Nylon (Polyamide 6/6)	Grade 2	108 Rockwell R	* BL-02064-NY
22.23 (0.875") +/-0.051	Nylon (Polyamide 6/6)	Grade 2	108 Rockwell R	* BL-02223-NY
22.23 (0.875") +/-0.051	Acetal	Grade 2	118 Rockwell R	BL-02223-AC
22.23 (0.875") +/-0.051	Acrylic	Grade 3	132 Rockwell R	BL-02223-ACR
22.23 (0.875") +/-0.051	PTFE	Grade 1	68 Rockwell R	BL-02223-PTF
22.23 (0.875") +/-0.051	Polypropylene	Grade 2	86 Rockwell R	BL-02223-PP
25.40 (1.000") +/-0.051	Nylon (Polyamide 6/6)	Grade 2	108 Rockwell R	BL-02540-NY
25.40 (1.000") +/-0.051	PVC	Grade 2	114 Rockwell R	BL-02540-PVC
25.40 (1.000") +/-0.051	Acetal	Grade 2	118 Rockwell R	BL-02540-AC
25.40 (1.000") +/-0.051	Acrylic	Grade 3	132 Rockwell R	BL-02540-ACR
25.40 (1.000") +/-0.051	PTFE	Grade 1	68 Rockwell R	BL-02540-PTF
25.40 (1.000") +/-0.051	Polypropylene	Grade 2	86 Rockwell R	BL-02540-PP
28.58 (1.125") +/-0.051	Nylon (Polyamide 6/6)	Grade 3	108 Rockwell R	BL-02858-NY
28.58 (1.125") +/-0.000762	PVC	Grade 3	114 Rockwell R	BL-02858-PVC
28.58 (1.125") +/-0.051	Acetal	Grade 3	118 Rockwell R	BL-02858-AC
28.58 (1.125") +/-0.051	Acrylic	Grade 3	132 Rockwell R	BL-02858-ACR
28.58 (1.125") +/-0.051	Polypropylene	Grade 3	86 Rockwell R	BL-02858-PP
30.00 (1.181") +/-0.000762	PVC	Grade 3	114 Rockwell R	BL-03000-PVC
30.16 (1.188") +/-0.051	Acetal	Grade 3	118 Rockwell R	BL-03016-AC
30.16 (1.188") +/-0.051	PTFE	Grade 2	68 Rockwell R	BL-03016-PTF
31.75 (1.250") +/-0.051	Nylon (Polyamide 6/6)	Grade 3	108 Rockwell R	* BL-03175-NY
31.75 (1.250") +/-0.000762	PVC	Grade 3	114 Rockwell R	BL-03175-PVC
31.75 (1.250") +/-0.051	Acetal	Grade 3	118 Rockwell R	BL-03175-ACN
31.75 (1.250") +/-0.051	Acetal	Grade II	118 Rockwell R	BL-03175-ACB
31.75 (1.250") +/-0.051	Acrylic	Grade 3	132 Rockwell R	BL-03175-ACR
31.75 (1.250") +/-0.127	PTFE	Grade 2	68 Rockwell R	BL-03175-PTF
31.75 (1.250") +/-0.127	Polypropylene	Grade 3	86 Rockwell R	BL-03175-PP
34.93 (1.375") +/-0.051	Acetal	Grade 3	118 Rockwell R	BL-03493-AC
34.93 (1.375") +/-0.051	Acrylic	Grade 3	132 Rockwell R	BL-03493-ACR
34.93 (1.375") +/-0.051	Nylon (Polyamide 6/6)	Grade 3	108 Rockwell R	BL-03494-NY
34.93 (1.375") +/-0.051	Polypropylene	Grade 3	86 Rockwell R	BL-03493-PP
38.10 (1.500") +/-0.051	Nylon (Polyamide 6/6)	Grade 3	108 Rockwell R	BL-03810-NY



Stocked or Short Delivery



Usually Available Short Delivery



Long delivery or not in current production

* Large Minimum Quantities

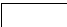
** Available only while stock lasts

Plastic Balls


Diameter (D) mm	Material	Precision Grade	Hardness	Part Number
38.10 (1.500") +/-0.000762	PVC	Grade 3	114 Rockwell R	BL-03810-PVC
38.10 (1.500") +/-0.051	Acetal	Grade 3	118 Rockwell R	BL-03810-AC
38.10 (1.500") +/-0.051	Acrylic	Grade 3	132 Rockwell R	BL-03810-ACR
38.10 (1.500") +/-0.051	PTFE	Grade 2	68 Rockwell R	BL-03810-PTF
38.10 (1.500") +/-0.051	Polypropylene	Grade 3	86 Rockwell R	BL-03810-PP
44.45 (1.750") +/-0.051	Nylon (Polyamide 6/6)	Grade 3	108 Rockwell R	BL-04445-NY
44.45 (1.750") +/-0.000762	PVC	Grade 3	114 Rockwell R	BL-04445-PVC
44.45 (1.750") +/-0.051	Acetal	Grade 3	118 Rockwell R	BL-04445-AC
44.45 (1.750") +/-0.051	Acrylic	Grade 3	132 Rockwell R	BL-04445-ACR
44.45 (1.750") +/-0.051	Polypropylene	Grade 3	86 Rockwell R	BL-04445-PP
50.80 (2.000") +/-0.051	Acetal	Grade 3	118 Rockwell R	BL-05080-AC
50.80 (2.000") +/-0.051	Acrylic	Grade 3	132 Rockwell R	BL-05080-ACR
50.80 (2.000") +/-0.051	PTFE	Grade 2	68 Rockwell R	BL-05080-PTF
50.80 (2.000") +/-0.051	Polypropylene	Grade 3	86 Rockwell R	BL-05080-PP
57.15 (2.250") +/-0.000762	PVC	Grade 3	114 Rockwell R	BL-05715-PVC
57.15 (2.250") +/-0.051	Acrylic	Grade 3	132 Rockwell R	BL-05715-ACR
57.15 (2.250") +/-0.051	Polypropylene	Grade 3	86 Rockwell R	BL-05715-PP
63.50 (2.500") +/-0.051	Acrylic	Grade 3	132 Rockwell R	BL-06350-ACR
63.50 (2.500") +/-0.051	Polypropylene	Grade 3	86 Rockwell R	BL-06350-PP
69.85 (2.750") +/-0.051	Acrylic	Grade 3	132 Rockwell R	BL-06985-ACR
69.85 (2.750") +/-0.051	Polypropylene	Grade 3	86 Rockwell R	BL-06985-PP
76.20 (3.000") +/-0.051	Acrylic	Grade 3	132 Rockwell R	BL-07620-ACR
76.20 (3.000") +/-0.051	Polypropylene	Grade 3	86 Rockwell R	BL-07620-PP
101.60 (4.000") +/-0.051	Acrylic	Grade 3	132 Rockwell R	BL-10160-ACR
101.60 (4.000") +/-0.000762	Polypropylene	Grade 3	86 Rockwell R	BL-10160-PP

Plastic Balls - Bored

Diameter (D) mm	Inside Diameter (d1) mm	Width (B) mm	Shoulder Diameter (dn) mm	Material	Part Number
5.20 (0.205")	2.000	4.00	3.90	Plastic	** BLB-00520-00200-W3
7.90 (0.311")	3.000	6.00	5.40	Plastic	* BLB-00790-00300-W3
8.25 (0.325")	4.000	5.00	6.25	Plastic	* BLB-00825-00400-W3
10.20 (0.402")	5.000	6.00	8.00	Plastic	** BLB-01020-00500-W3
10.20 (0.402")	6.000	6.00	8.00	Plastic	* BLB-01020-00600-W3
11.10 (0.437")	5.000	8.00	7.70	Plastic	* BLB-01110-00500-W3
11.28 (0.444")	4.830	7.92	7.62	Plastic	* BLB-01128-00483-W3
12.70 (0.500")	6.000	9.00	8.90	Plastic	* BLB-01270-00600-W3
13.11 (0.516")	6.350	9.53	8.99	Plastic	* BLB-01311-00635-W3

 Stocked or Short Delivery

 Usually Available Short Delivery

 Long delivery or not in current production

* Large Minimum Quantities

** Available only while stock lasts

Plastic Balls - Bored

Diameter (D) mm	Inside Diameter (d1) mm	Width (B) mm	Shoulder Diameter (dn) mm		Part Number
13.20 (0.520")	8.000	8.00	10.00	Plastic	* BLB-01320-00800-W3
15.80 (0.622")	8.000	12.00	10.30	Plastic	* BLB-01580-00800-W3
15.88 (0.625")	7.940	11.10	11.35	Plastic	* BLB-01588-00794-W3
16.00 (0.630")	10.000	9.00	13.00	Plastic	* BLB-01600-01000-W3
18.00 (0.709")	12.000	10.00	15.00	Plastic	* BLB-01800-01200-W3
18.24 (0.718")	9.530	12.70	12.80	Plastic	* BLB-01824-00953-W3
19.00 (0.748")	10.000	14.00	12.90	Plastic	** BLB-01900-01000-W3
21.03 (0.828")	11.110	14.27	15.27	Plastic	** BLB-02103-01111-W3
22.00 (0.866")	15.000	12.00	18.00	Plastic	* BLB-02200-01500-W3
22.22 (0.875")	12.000	16.00	15.40	Plastic	* BLB-02222-01200-W3
23.83 (0.938")	12.700	15.88	17.78	Plastic	* BLB-02383-01270-W3
25.10 (0.988")	17.000	14.00	20.00	Plastic	* BLB-02510-01700-W3
25.25 (0.994")	14.000	19.00	16.80	Plastic	* BLB-02525-01400-W3
28.30 (1.114")	16.000	21.00	19.30	Plastic	* BLB-02830-01600-W3
28.58 (1.125")	15.880	19.05	21.28	Plastic	* BLB-02858-01588-W3
28.90 (1.138")	20.000	16.00	24.00	Plastic	* BLB-02890-02000-W3
31.35 (1.234")	18.000	23.00	21.80	Plastic	* BLB-03135-01800-W3
33.32 (1.312")	19.050	22.23	24.84	Plastic	* BLB-03332-01905-W3
34.90 (1.374")	20.000	25.00	24.30	Plastic	* BLB-03490-02000-W3
35.50 (1.398")	25.000	20.00	29.00	Plastic	* BLB-03550-02500-W3
38.10 (1.500")	22.000	28.00	25.80	Plastic	* BLB-03810-02200-W3
40.90 (1.610")	30.000	22.00	34.00	Plastic	* BLB-04090-03000-W3
42.80 (1.685")	25.000	31.00	29.50	Plastic	* BLB-04280-02500-W3
44.45 (1.750")	25.400	34.93	32.23	Plastic	* BLB-04445-02540-W3
51.00 (2.008")	30.000	37.00	34.80	Plastic	* BLB-05100-03000-W3

Rubber Balls

Diameter (D) mm	Material	Grade	Hardness	Part Number
4.76 (0.187") +/-0.051	Santoprene Rubber	Grade II	Shore 40D	BL-00476-R40D
4.76 (0.187") +/-0.051	Santoprene Rubber	Grade 3	Shore 87A	BL-00476-R87A
12.70 (0.500") +/-0.051	Santoprene Rubber	Grade II	Shore 40D	BL-01270-R40D
15.88 (0.625") +/-0.051	Santoprene Rubber	Grade 3	Shore 87A	BL-01588-R87A
19.05 (0.750") +/-0.051	Santoprene Rubber	Grade II	Shore 40D	BL-01905-R40D
19.05 (0.750") +/-0.051	Santoprene Rubber	Grade 3	Shore 87A	BL-01905-R87A
25.40 (1.000") +/-0.051	Santoprene Rubber	Grade 3	Shore 87A	BL-02540-R87A
31.75 (1.250") +/-0.127	Santoprene Rubber	Grade III	Shore 40D	BL-03175-R40D
31.75 (1.250") +/-0.127	Santoprene Rubber	Grade 3	Shore 87A	BL-03175-R87A
38.10 (1.500") +/-0.127	Santoprene Rubber	Grade III	Shore 40D	BL-03810-R40D
38.10 (1.500") +/-0.127	Santoprene Rubber	Grade 3	Shore 87A	BL-03810-R87A
44.45 (1.750") +/-0.127	Santoprene Rubber	Grade III	Shore 40D	BL-04445-R40D
44.45 (1.750") +/-0.127	Santoprene Rubber	Grade 3	Shore 87A	BL-04445-R87A
50.80 (2.000") +/-0.127	Santoprene Rubber	Grade 3	Shore 87A	BL-05080-R87A
57.15 (2.250") +/-0.127	Santoprene Rubber	Grade III	Shore 40D	BL-05715-R40D
57.15 (2.250") +/-0.127	Santoprene Rubber	Grade 3	Shore 87A	BL-05715-R87A

Stocked or Short Delivery

Usually Available Short Delivery

Long delivery or not in current production

* Large Minimum Quantities

** Available only while stock lasts

Rubber Balls

Diameter (D) mm	Material	Grade	Hardness	Part Number
63.50 (2.500") +/-0.127	Santoprene Rubber	Grade 3	Shore 87A	BL-06350-R87A
69.85 (2.750") +/-0.127	Santoprene Rubber	Grade 3	Shore 87A	BL-06985-R87A
82.55 (3.250") +/-0.127	Santoprene Rubber	Grade 3	Shore 87A	BL-08255-R87A
95.25 (3.750") +/-0.127	Santoprene Rubber	Grade 3	Shore 87A	BL-09525-R87A

Threaded Metallic Balls

Diameter (D) mm	Thread Size	Precision Grade	Hardness	Material	Part Number
3.000 (0.118") +/-0.0254	M1.2x0.25 Thread x 1.5mm Deep	Grade 100	35 Rockwell C	Titanium Ti-Gr23 Ti-6Al4V-ELI	BLT-00300-T23-12
3.000 (0.118") +/-0.0254	M1.6x0.35 Thread x 1.5mm Deep	Grade 100	35 Rockwell C	Titanium Ti-Gr23 Ti-6Al4V-ELI	BLT-00300-T23-16
4.000 (0.157") +/-0.0254	M1.6x0.35 Thread x 2mm Deep	Grade 100	35 Rockwell C	Titanium Ti-Gr23 Ti-6Al4V-ELI	BLT-00400-T23-16
4.000 (0.157") +/-0.0254	M1.2x0.25 Thread x 2mm Deep	Grade 100	35 Rockwell C	Titanium Ti-Gr23 Ti-6Al4V-ELI	BLT-00400-T23-12
5.000 (0.197") +/-0.0254	M1.6x0.35 Thread x 2.5mm Deep	Grade 100	35 Rockwell C	Titanium Ti-Gr23 Ti-6Al4V-ELI	BLT-00500-T23-16
5.000 (0.197") +/-0.0254	M1.2x0.25 Thread x 2.5mm Deep	Grade 100	35 Rockwell C	Titanium Ti-Gr23 Ti-6Al4V-ELI	BLT-00500-T23-12
6.000 (0.236") +/-0.0254	M1.2x0.25 Thread x 3mm Deep	Grade 100	35 Rockwell C	Titanium Ti-Gr23 Ti-6Al4V-ELI	BLT-00600-T23-12
6.000 (0.236") +/-0.0254	M1.6x0.35 Thread x 3mm Deep	Grade 100	35 Rockwell C	Titanium Ti-Gr23 Ti-6Al4V-ELI	BLT-00600-T23-16
8.000 (0.315") +/-0.0254	M1.2x0.25 Thread x 4mm Deep	Grade 100	35 Rockwell C	Titanium Ti-Gr23 Ti-6Al4V-ELI	BLT-00800-T23-12
8.000 (0.315") +/-0.0254	M1.6x0.35 Thread x 4mm Deep	Grade 100	35 Rockwell C	Titanium Ti-Gr23 Ti-6Al4V-ELI	BLT-00800-T23-16

Tooling Balls

Diameter (A) mm	Shank Diameter (B) mm	Base to Centre (C) mm	Shoulder to Centre (D) mm	Part Number
6.000 (0.236") +/- 0.0051	3.000 +0.0000 / -0.0076	10.000 +/- 0.0051	6.000	BLTO-00600-S440-1SP
6.000 (0.236") +/- 0.0051	3.000 +0.0000 / -0.0102	10.000 +/- 0.0051	6.000	BLTO-00600-CS-1S
6.350 (0.250") +/- 0.0051	3.175 +0.0000 / -0.0076	14.224	5.080	BLTO-00635-CS-S2P
6.350 (0.250") +/- 0.0051	3.175 +0.0000 / -0.0102	14.224	5.080	BLTO-00635-CS-S2
6.350 (0.250") +/-0.0051	3.175 +0.0000 / -0.0102	14.300		BLTO-00635-S440-1
6.350 (0.250") +/-0.0051	3.175 +0.0000 / -0.0076	14.300		BLTO-00635-CS-1P
6.350 (0.250") +/- 0.0051	3.175 +0.0000 / -0.0076	14.300		BLTO-00635-CS-2P
6.350 (0.250") +/- 0.0051	3.175 +0.0000 / -0.0102	14.300		BLTO-00635-CS-2
6.350 (0.250") +/-0.0051	3.175 +0.0000 / -0.0102	14.300		BLTO-00635-CS-1
6.350 (0.250") +/-0.0051	3.175 +0.0000 / -0.0076	14.300		BLTO-00635-S440-1P
6.350 (0.250") +/- 0.0051	3.175 +0.0000 / -0.0076	14.300	5.080	BLTO-00635-CS-1SP



Stocked or Short Delivery



Usually Available Short Delivery



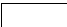
Long delivery or not in current production

* Large Minimum Quantities


** Available only while stock lasts

Tooling Balls

Diameter (A) mm	Shank Diameter (B) mm	Base to Centre (C) mm	Shoulder to Centre (D) mm	Part Number
6.350 (0.250") +/- 0.0051	3.175 +0.0000 / -0.0102	14.300 +/- 0.0051	5.080	BLTO-00635-CS-1S
6.350 (0.250") +/- 0.0051	3.175 +0.0000 / -0.0102	14.300 +/- 0.0051	5.080	BLTO-00635-S440-1S
6.350 (0.250") +/- 0.0051	3.175 +0.0000 / -0.0076	14.300 +/- 0.0051	5.080	BLTO-00635-S440-1SP
9.525 (0.375") +/-0.0051	4.763 +0.0000 / -0.0076	19.050		BLTO-00953-S440-1P
9.525 (0.375") +/-0.0051	4.763 +0.0000 / -0.0076	19.050		BLTO-00953-CS-1P
9.525 (0.375") +/- 0.0051	4.763 +0.0000 / -0.0102	19.050		BLTO-00953-CS-2
9.525 (0.375") +/-0.0051	4.763 +0.0000 / -0.0102	19.050		BLTO-00953-CS-1
9.525 (0.375") +/-0.0051	4.763 +0.0000 / -0.0102	19.050		BLTO-00953-S440-1
9.525 (0.375") +/- 0.0051	4.763 +0.0000 / - 0.0076	19.050		BLTO-00953-CS-2P
9.525 (0.375") +/- 0.0051	4.763 +0.0000 / -0.0102	19.050 +/- 0.0051	7.620	BLTO-00953-CS-1S
9.525 (0.375") +/- 0.0051	4.763 +0.0000 / - 0.0076	19.050	7.620	BLTO-00953-CS-S2P
9.525 (0.375") +/- 0.0051	4.763 +0.0000 / -0.0102	19.050	7.620	BLTO-00953-CS-S2
9.525 (0.375") +/- 0.0051	4.763 +0.0000 / -0.0076	19.050 +/- 0.0051	7.620	BLTO-00953-S440-1SP
9.525 (0.375") +/- 0.0051	4.763 +0.0000 / -0.0076	19.050 +/- 0.0051	7.620	BLTO-00953-CS-1SP
9.525 (0.375") +/- 0.0051	4.763 +0.0000 / -0.0102	19.050 +/- 0.0051	7.620	BLTO-00953-S440-1S
12.000 (0.472") +/- 0.0051	6.000 +/- 0.0051	22.000	12.000	BLTO-01200-CS-C1
12.000 (0.472") +/- 0.0051	6.000 +/- 0.0051	22.000	12.000	BLTO-01200-CS-C1-T
12.700 (0.500") +/- 0.0051	6.350 +/- 0.0051	7.925	7.938	BLTO-01270-CS-C1
12.700 (0.500") +/- 0.0051	6.350 +/- 0.0051	7.925	7.938	BLTO-01270-CS-C1-T
12.700 (0.500") +/- 0.0051	6.350 +/- 0.0051	7.925	7.938	BLTO-01270-S440-C1
12.700 (0.500") +/- 0.0051	6.350 +/- 0.0051	7.925	7.938	BLTO-01270-S440-C1-T
12.700 (0.500") +/- 0.0051	6.350 +0.0000 / -0.0102	15.875	7.938	BLTO-01270-CS-S2-A
12.700 (0.500") +/- 0.0051	6.350 +/- 0.0051	15.875	7.938	BLTO-01270-CS-C2-A
12.700 (0.500") +/- 0.0051	6.350 +/- 0.0051	22.225	12.700	BLTO-01270-CS-C2-B
12.700 (0.500") +/-0.0051	6.350 +0.0000 / -0.0076	23.876		BLTO-01270-CS-1P-A
12.700 (0.500") +/- 0.0051	6.350 +0.0000 / -0.0102	23.876		BLTO-01270-CS-2-A
12.700 (0.500") +/-0.0051	6.350 +0.0000 / -0.0102	23.876		BLTO-01270-CS-1-A
12.700 (0.500") +/- 0.0051	6.350 +0.0000 / - 0.0076	23.876		* BLTO-01270-CS-2P-A
12.700 (0.500") +/- 0.0051	6.350 +0.0000 / -0.0076	23.876 +/- 0.0051	10.160	BLTO-01270-CS-1SP-A
12.700 (0.500") +/- 0.0051	6.350 +0.0000 / -0.0102	23.876	10.160	BLTO-01270-CS-S2-B
12.700 (0.500") +/- 0.0051	6.350 +0.0000 / -0.0076	23.876 +/- 0.0051	10.160	BLTO-01270-S440-1SP-A
12.700 (0.500") +/- 0.0051	6.350 +0.0000 / -0.0102	23.876 +/- 0.0051	10.160	BLTO-01270-CS-1S-A

 Stocked or Short Delivery

 Usually Available Short Delivery

 Long delivery or not in current production

* Large Minimum Quantities

** Available only while stock lasts

Tooling Balls

Diameter (A) mm	Shank Diameter (B) mm	Base to Centre (C) mm	Shoulder to Centre (D) mm	Part Number
12.700 (0.500") +/- 0.0051	6.350 +0.0000 / -0.0102	23.876 +/- 0.0051	10.160	BLTO-01270-S440-1S-A
12.700 (0.500") +/- 0.0051	6.350 +0.0000 / -0.0076	23.876	10.160	BLTO-01270-CS-S2P-A
12.700 (0.500") +/- 0.0051	6.350 +/- 0.0051	23.876	12.700	BLTO-01270-CS-C2-C
12.700 (0.500") +/- 0.0051	6.350 +0.0000 / -0.0102	28.575	12.700	BLTO-01270-CS-S2-C
12.700 (0.500") +/- 0.0051	6.350 +0.0000 / -0.0076	28.575	12.700	BLTO-01270-CS-S2P-B
12.700 (0.500") +/- 0.0051	6.350 +0.0000 / -0.0076	34.925 +/- 0.0051	12.700	BLTO-01270-S440-1SP-B
12.700 (0.500") +/- 0.0051	6.350 +0.0000 / -0.0076	34.925	12.700	BLTO-01270-CS-S2P-C
12.700 (0.500") +/- 0.0051	6.350 +0.0000 / -0.0102	34.925 +/- 0.0051	12.700	BLTO-01270-S440-1S-B
12.700 (0.500") +/- 0.0051	6.350 +0.0000 / -0.0102	34.925	12.700	BLTO-01270-CS-S2-D
12.700 (0.500") +/- 0.0051	6.350 +0.0000 / -0.0102	34.925 +/- 0.0051	12.700	BLTO-01270-CS-1S-B
12.700 (0.500") +/- 0.0051	6.350 +0.0000 / -0.0076	34.925 +/- 0.0051	12.700	BLTO-01270-CS-1SP-B
12.700 (0.500") +/- 0.0051	6.350 +0.0000 / -0.0102	38.100		BLTO-01270-CS-1-B
12.700 (0.500") +/- 0.0051	6.350 +0.0000 / -0.0102	38.100		BLTO-01270-CS-2-B
12.700 (0.500") +/- 0.0051	6.350 +0.0000 / -0.0076	38.100		BLTO-01270-CS-2P-B
12.700 (0.500") +/- 0.0051	6.350 +0.0000 / -0.0076	38.100		BLTO-01270-CS-1P-B
12.700 (0.500") +/- 0.0051	6.350 +0.0000 / -0.0102	38.100	12.700	BLTO-01270-CS-S2-E
12.700 (0.500") +/- 0.0051	6.350 +0.0000 / -0.0102	41.275	25.400	BLTO-01270-CS-S2-F
12.700 (0.500") +/- 0.0051	6.350 +0.0000 / -0.0076	41.275	25.400	BLTO-01270-CS-S2P-D
12.700 (0.500") +/- 0.0051	6.350 +0.0000 / -0.0102	47.625	31.750	BLTO-01270-CS-S2-G
12.700 (0.500") +/- 0.0051	6.350 +0.0000 / -0.0102	73.025		BLTO-01270-CS-2-C
12.700 (0.500") +/- 0.0051	7.938 +/- 0.0051	23.876	12.700	BLTO-01270-CS-C2-D
12.700 (0.500") +/- 0.0051	7.938 +0.0000 / -0.0102	38.100		BLTO-01270-CS-2-D
12.700 (0.500") +/- 0.0051	7.938 +0.0000 / -0.0102	38.100	12.700	BLTO-01270-CS-S2-H
12.700 (0.500") +/- 0.0051	9.525 +0.0000 / -0.0076	38.100		BLTO-01270-CS-1P-C
12.700 (0.500") +/- 0.0051	9.525 +0.0000 / -0.0102	38.100		BLTO-01270-CS-1-C
12.700 (0.500") +/- 0.0051	9.525 +0.0000 / -0.0102	38.100	12.700	BLTO-01270-CS-S2-J
15.875 (0.625") +/- 0.0051	7.938 +0.0000 / -0.0102	26.670	11.430	BLTO-01588-CS-S2
15.875 (0.625") +/- 0.0051	7.938 +0.0000 / -0.0076	26.670	11.430	BLTO-01588-CS-S2P
15.875 (0.625") +/- 0.0051	7.938 +0.0000 / -0.0076	27.000		BLTO-01588-CS-2P
15.875 (0.625") +/- 0.0051	7.938 +0.0000 / -0.0102	27.000		BLTO-01588-CS-2
19.050 (0.750") +/- 0.0051	9.525 +0.0000 / -0.0102	31.750		BLTO-01905-CS-2
19.050 (0.750") +/- 0.0051	9.525 +0.0000 / -0.0076	31.750		BLTO-01905-CS-2P

Stocked or Short Delivery
 Usually Available Short Delivery
 Long delivery or not in current production

* Large Minimum Quantities

** Available only while stock lasts

Tooling Balls

Diameter (A) mm	Shank Diameter (B) mm	Base to Centre (C) mm	Shoulder to Centre (D) mm	Part Number
19.050 (0.750") +/- 0.0051	9.525 +0.0000 / -0.0102	31.750 +/- 0.0051	12.700	BLTO-01905-CS-1S
19.050 (0.750") +/- 0.0051	9.525 +0.0000 / -0.0076	31.750	12.700	BLTO-01905-CS-S2P
19.050 (0.750") +/- 0.0051	9.525 +0.0000 / -0.0076	31.750 +/- 0.0051	12.700	BLTO-01905-S440-1SP
19.050 (0.750") +/- 0.0051	9.525 +0.0000 / -0.0102	31.750	12.700	BLTO-01905-CS-S2
22.225 (0.875") +/- 0.0051	11.113 +0.0000 / -0.0076	36.576		BLTO-02223-CS-2P
25.400 (1.000") +/- 0.0051	12.700 +0.0000 / -0.0102	41.275		BLTO-02540-CS-2
25.400 (1.000") +/- 0.0051	12.700 +0.0000 / -0.0076	41.275		BLTO-02540-CS-2P
25.400 (1.000") +/- 0.0051	12.700 +0.0000 / -0.0076	41.275	17.780	BLTO-02540-CS-S2P
25.400 (1.000") +/- 0.0051	12.700 +0.0000 / -0.0102	41.275	17.780	BLTO-02540-CS-S2



Stocked or Short Delivery



Usually Available Short Delivery



Long delivery or not in current production

* Large Minimum Quantities

** Available only while stock lasts

TIPS

Chrome steel and 440C stainless are bearing grade balls. 304 and 316 grade stainless are softer and used for corrosion resistance and low load.

440C grade stainless is highly magnetic. 304 and 316 grade stainless are slightly magnetic.

Threaded Titanium balls are suitable for body piercings.

Silicon Nitride (Si_3N_4) is a grey ceramic. Zirconia (ZrO_2) is off white. Ruby is a reddish colour and sapphire has a glassy appearance, but not perfectly clear.

Precision grades indicate the tolerance of the diameter and the roundness. The lower the number the more precise.

<http://www.minibearings.com.au/technical/balls/grades/>

Polypropylene balls float in water and can be used for float levels.

Rubber balls are not toys. They are used for chemical applications. Refer to the website for full details.

<http://www.minibearings.com.au/store/categories/santoprene/>



Distributed By

Miniature Bearings Australia
<http://www.minibearings.com.au>
sales@minibearings.com.au

Resellers: Please place your contact sticker over our details

Avoid verbal communication

We sell an extensive range of products with varying amounts of technical data. Please assist us to provide you with accurate information by placing your orders and enquiries online or by e-mail.

Balls Range